

GLODENI

MULTIFUNCTIONAL INDUSTRIAL PLATFORM



ORGANIZAȚIA PENTRU DEZVOLTAREA SECTORULUI
ÎNȚREPRINDERILOR MICI ȘI MIJLOCII

GLODENI DISTRICT PROFILE



Total Area

754,18 km²



Currency

Moldovan Leu (MDL)



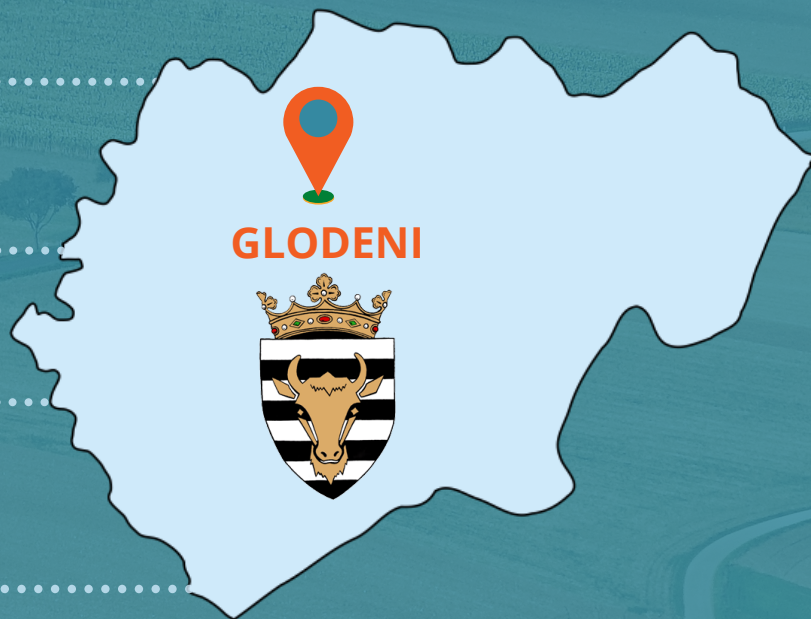
District population

56.400



Spoken languages

Romanian, Russian



Glodeni district has an area of 754,18 km². The number of available population as of 01.01.2020 is 56.4 thousand people, of which 35.1 thousand are currently active labour force. The district has 34 communities and 1 city. In Glodeni region activate, 2.941 economic agents, of which 38 are manufacturing companies. The region's economy employs about 6.3 thousand people.

The city of Glodeni is a center for processing agricultural production in the district, the region being specialized in growing cereals, fruits, vegetables, tobacco and sugar beet.

GOODS THAT CAN BE PRODUCED COMPETITIVELY IN GLODENI



Tobacco growung



Food proccessing



Textile



Orchard



Animal husbandry



Sugar production

HUMAN RESOURCES

Working age population (15 to 63 years old)

35.154 people

Employment rate (ratio of the employed to the working age population)

42.6%

Unemployment rate

4.3%

DISTANCE



- **186 km** to the Chişinău International Airport.



- **173 km** to Chişinău;
- **120 km** to the nearest border checkpoint with Ukraine;
- **35 km** to the nearest border checkpoint with Romania



- Giurgiuleşti International Free Port is located at circa **335 km** distance from Glodeni City

UTILITY COST



Electricity



0.10 EURO
kWh

Gas



0.34 EURO
m3

Water



2.7 EURO
m3

Sewerage



2.5 EURO
m3

RENTAL PRICE

FOR RENT



Office and industrial place



1.5 - 10 EURO
m2



TAXES



Corporate income tax

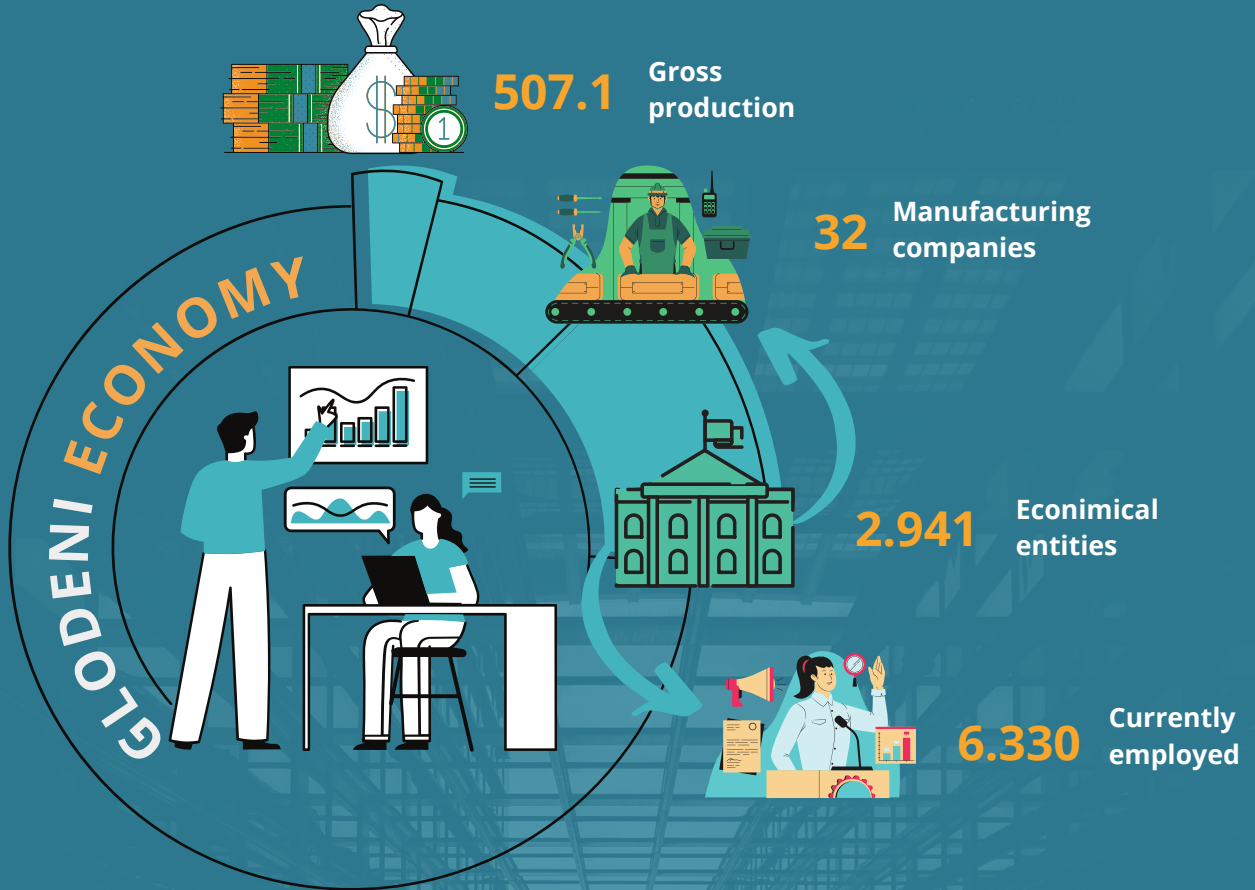


12%

VAT



20%



Multifunctional Industrial Platform

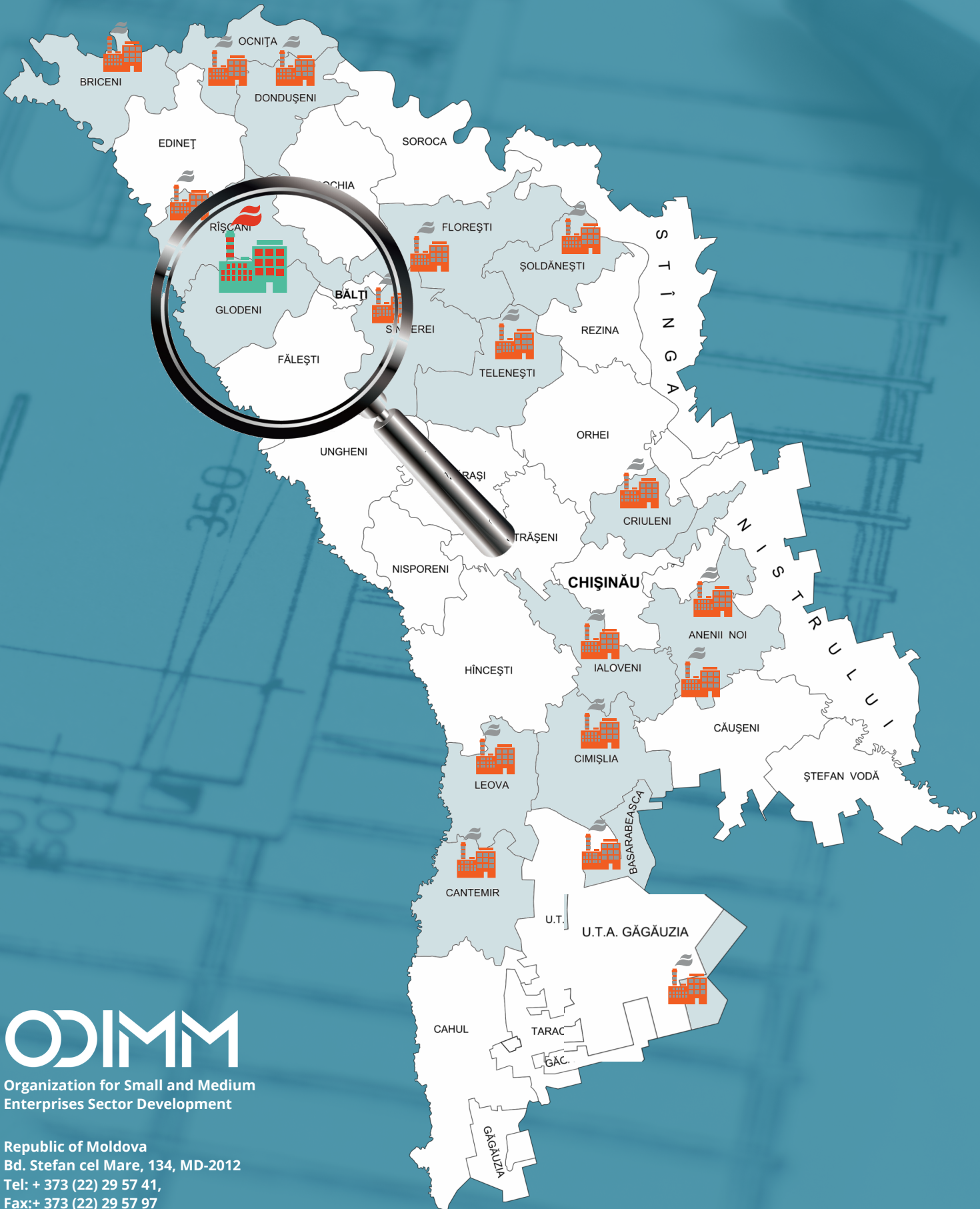


The land for Industrial Multifunctional Platform in Glodeni district for the Multifunctional Industrial Platform is located outside the city of Glodeni and has an area of 10 ha. The green field land destination is for construction and is a public property. It has a favourable connections with R53 national road and easy access to the neighbourhood countries.

- Gas pipeline available at the border of land
- 10Kv electricity available at the border of land
- The water and sewer pipes available at the border of land



MULTIFUNCTIONAL INDUSTRIAL PLATFORM



ODIMM

Organization for Small and Medium
Enterprises Sector Development

Republic of Moldova
Bd. Stefan cel Mare, 134, MD-2012
Tel: + 373 (22) 29 57 41,
Fax: + 373 (22) 29 57 97
E-mail: info@odimm.md
Web: www.odimm.md
www.businessportal.md