

BRICENI

MULTIFUNCTIONAL INDUSTRIAL PLATFORM



ORGANIZAȚIA PENTRU DEZVOLTAREA SECTORULUI
ÎNȚREPRINDERILOR MICI ȘI MIJLOCII

BRICENI DISTRICT PROFILE



Total Area

814,4 km²



Currency

Moldovan Leu (MDL)



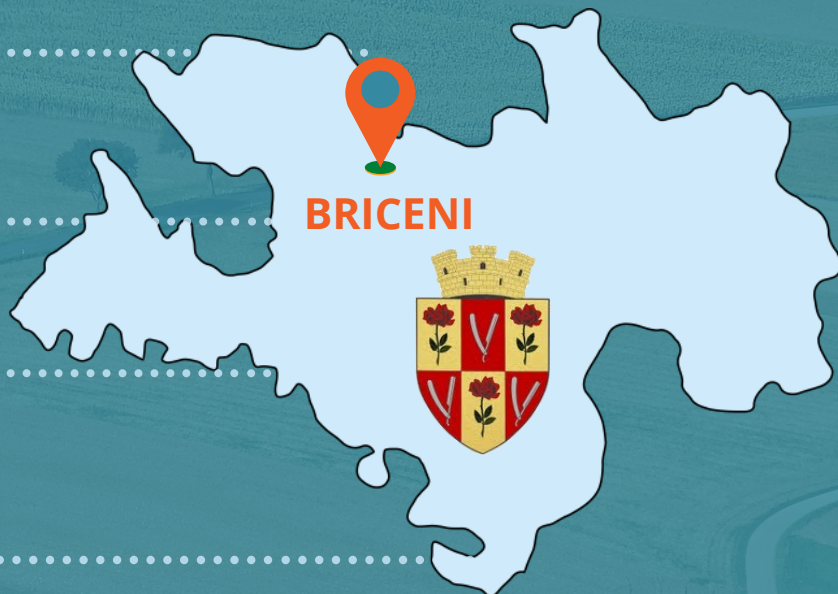
District population

73.958



Spoken languages

Romanian, Russian



Briceni district has an area of 814.4 km². The number of available population as of 01.01.2020 is 73.9 thousand people, of which 49.9 thousand people are currently active labour force. The district has 26 communities and 2 cities. In Briceni region activate, 2.608 economic agents, of which 21 are manufacturing companies. The region's economy employs about 8.5 thousand people.

The city has great economic potential, highly qualified personnel. Located in the extreme northwest of the Republic of Moldova, the district borders Ukraine in the north and Romania in the west.

Briceni district is presented as an agro-industrial region and have excellent conditions for the development of many industries: grain production, gardening, potato growing, apple tree orchards, food processing and textile.

GOODS THAT CAN BE PRODUCED COMPETITIVELY IN BRICENI



Agriculture



Food processing



Textile



Orchards



Animal husbandry



Potato growing

HUMAN RESOURCES

Working age population (15 to 63 years old)

49.950 people

Employment rate (ratio of the employed to the working age population)

42.5%

Unemployment rate

4.1%

DISTANCE



- **250 km** to the Chişinău International Airport.



- **240 km** to Chişinău;
- **2.3 km** to the nearest border checkpoint with Ukraine;
- **28 km** to the nearest border checkpoint with Romania



- Giurgiuleşti International Free Port is located at circa **433 km** distance from Briceni City

UTILITY COST



Electricity



0.10 EURO
kWh

Gas



0.34 EURO
m3

Water



2.2 EURO
m3

Sewerage



2.1 EURO
m3

RENTAL PRICE

FOR RENT



Office and industrial place



1.5 - 8.5 EURO

m2



TAXES



Corporate income tax

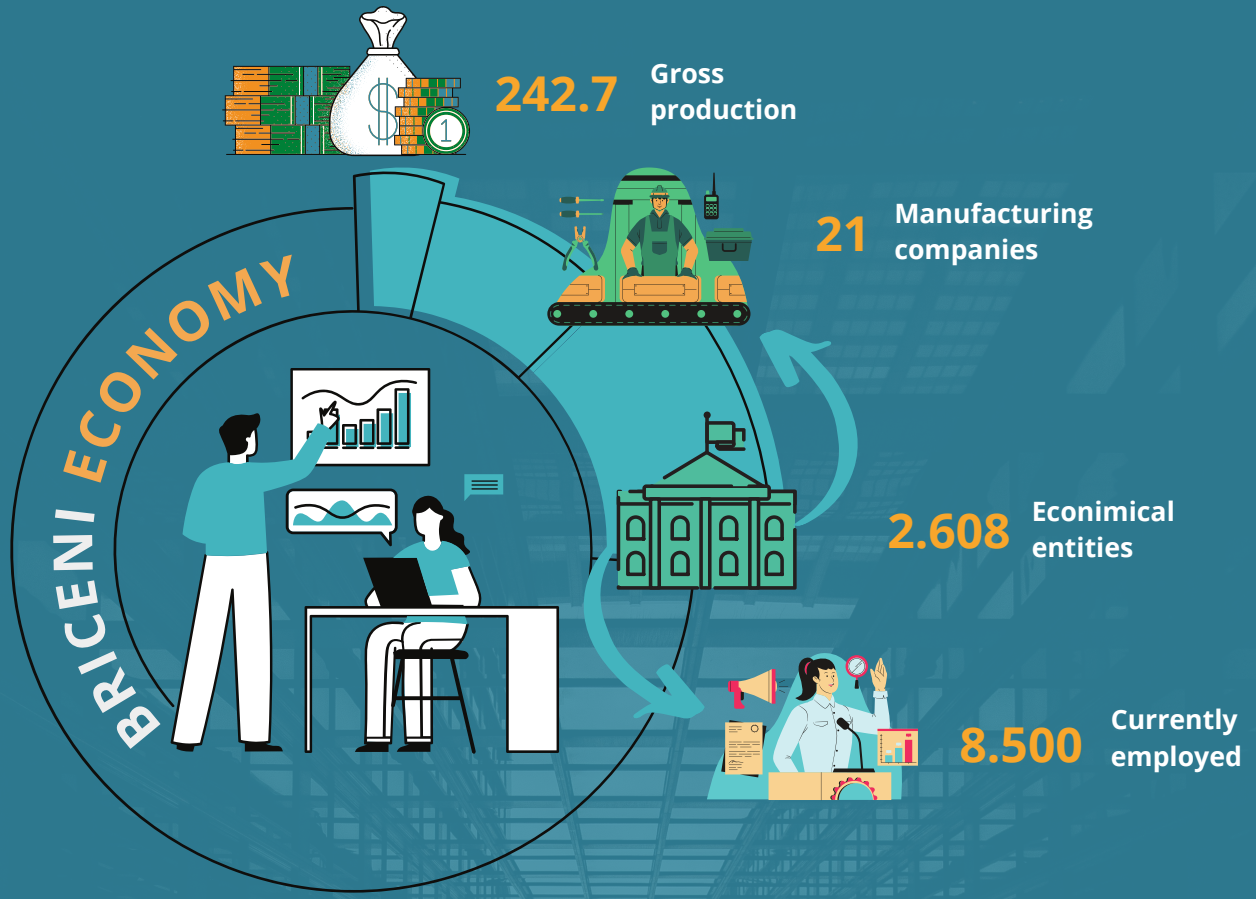


12%

VAT



20%

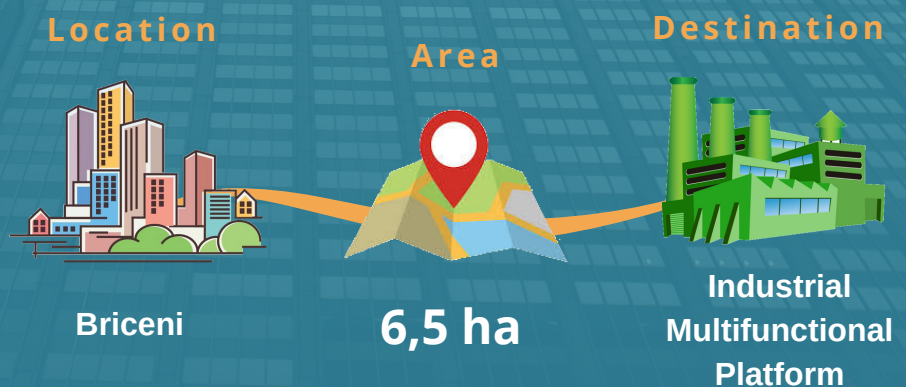


Multifunctional Industrial Platform

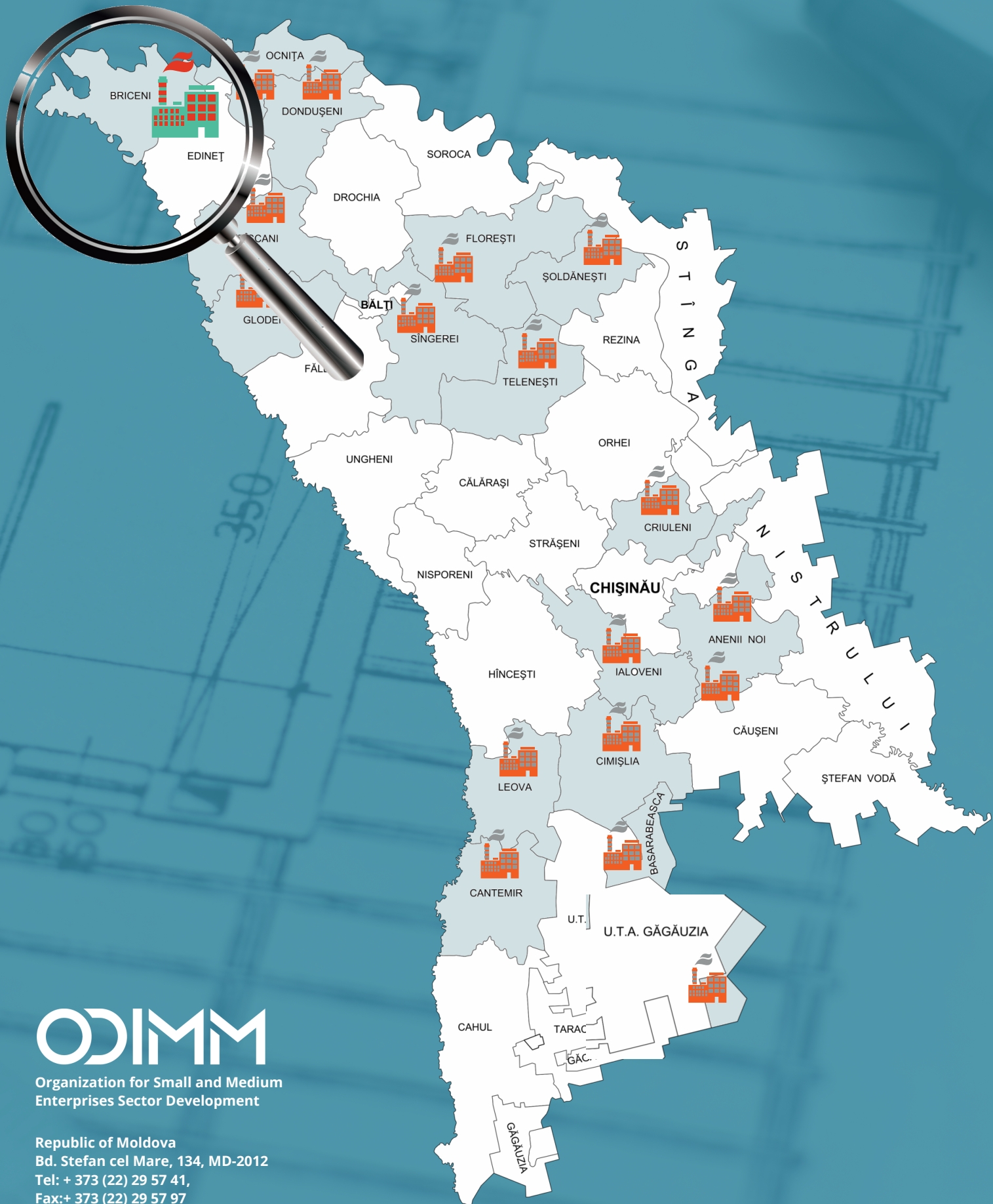


The land for Industrial Multifunctional Platform in Briceni district for the Multifunctional Industrial Platform is located outside the city of Briceni and has an area of 6.5 ha, cadastral number 1401106.568. The green field land destination is for construction and is a public property. It has a favourable connections with M5 international road and easy access to the neighbourhood countries.

- Gas pipeline available at a distance of 1000 m
- 10Kv electricity available at the border of land
- The water and sewer pipes are available at distance of 250 m



MULTIFUNCTIONAL INDUSTRIAL PLATFORM



ODIMM

Organization for Small and Medium
Enterprises Sector Development

Republic of Moldova
Bd. Stefan cel Mare, 134, MD-2012
Tel: + 373 (22) 29 57 41,
Fax: + 373 (22) 29 57 97
E-mail: info@odimm.md
Web: www.odimm.md
www.businessportal.md